



**Date:** 10/29/10

**Current Geography Selection:** (1 Selected) Places: Brentwood

**Your title for this geography:** BRENTWOOD

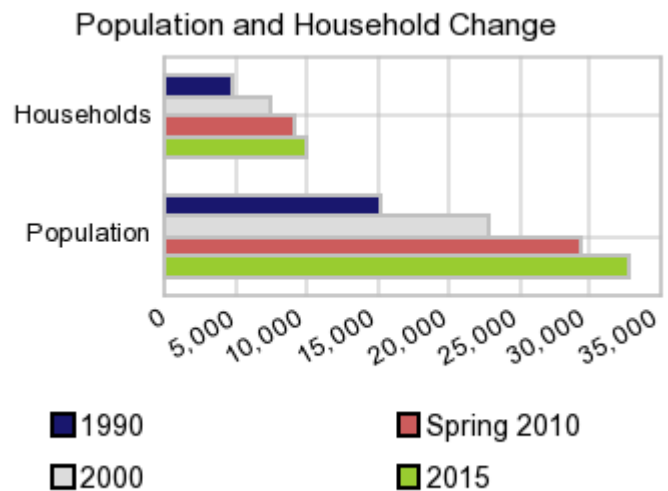
**Current Index Base:** Entire US

## Executive Summary Report with Charts

### Population Demographics

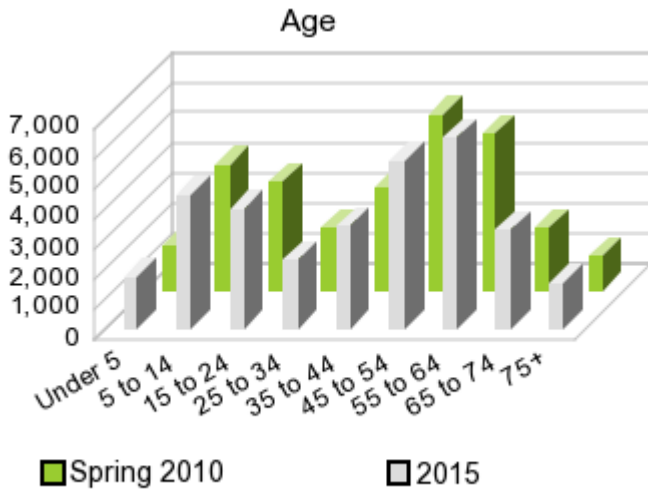
The number of households in the study area in 1990 was **4,755** and changed to **7,388** in 2000, representing a change of **55.4%**. The household count in Spring 2010 was **9,169** and the household projection for 2015 is **9,970**, a change of **8.7%**.

The population in the study area in 1990 was **15,225** and in 2000 it was **22,808**, roughly a **49.8%** change. The population in Spring 2010 was **29,211** and the projection for 2015 is **32,730** representing a change of **12.0%**.



	1990 Census	2000 Census	Spring 2010 Estimate	2015 Projection	Percent Change	
					1990 to 2000	2010- 2015
Total Population	15,225	22,808	29,211	32,730	49.8%	12.0%
Total Households	4,755	7,388	9,169	9,970	55.4%	8.7%

### Population by Age



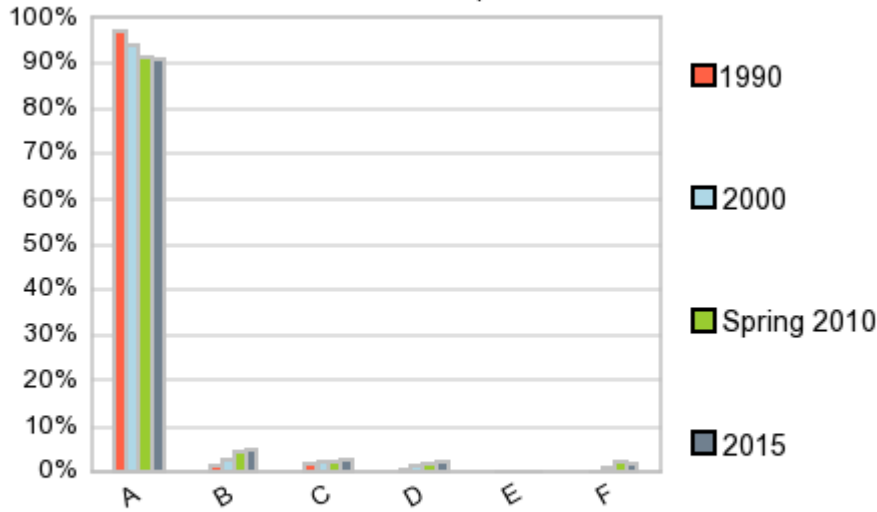
In 1990, the median age of the total population in the study area was **36.3**, and in 2000, it was **40.1**. The median age in Spring 2010 is **44.4** and it is predicted to change in five years to **46.0** years. In Spring 2010, females represented **50.7%** of the population with a median age of **44.4** and males represented **49.3%** of the population with a median age of **44.2** years. In Spring 2010, the most prominent age group in this geography is **Age 45 to 54** years. The age group least represented in this geography is **75 +** years.

### Age Groups

	1990 Census		2000 Census		Spring 2010 Estimate		2015 Projection		Percent Change	
		%		%		%		%	1990 to 2000	2010-2015
0 to 4	949	6.2%	1,291	5.7%	1,512	5.2%	1,719	5.3%	36.0%	13.7%
5 to 14	2,767	18.2%	4,205	18.4%	4,199	14.4%	4,425	13.5%	52.0%	5.4%
15 to 19	1,323	8.7%	1,801	7.9%	2,165	7.4%	2,314	7.1%	36.1%	6.9%
20 to 24	648	4.3%	698	3.1%	1,436	4.9%	1,684	5.1%	7.8%	17.3%
25 to 34	1,572	10.3%	1,671	7.3%	2,131	7.3%	2,306	7.0%	6.3%	8.2%
35 to 44	3,429	22.5%	4,109	18.0%	3,467	11.9%	3,452	10.5%	19.8%	-0.4%
45 to 54	2,462	16.2%	4,636	20.3%	5,838	20.0%	5,630	17.2%	88.3%	-3.6%
55 to 64	1,210	7.9%	2,469	10.8%	5,207	17.8%	6,386	19.5%	104.2%	22.6%
65 to 74	604	4.0%	1,145	5.0%	2,092	7.2%	3,290	10.1%	89.6%	57.3%
75 +	263	1.7%	782	3.4%	1,162	4.0%	1,522	4.6%	198.0%	30.9%

### Population by Race/Ethnicity

### Race and Ethnicity Percent Composition



In Spring 2010, the predominant race/ethnicity category in this study area is **White**. The race & ethnicity category least represented in this geography is **American Indian, Alaska Native**.

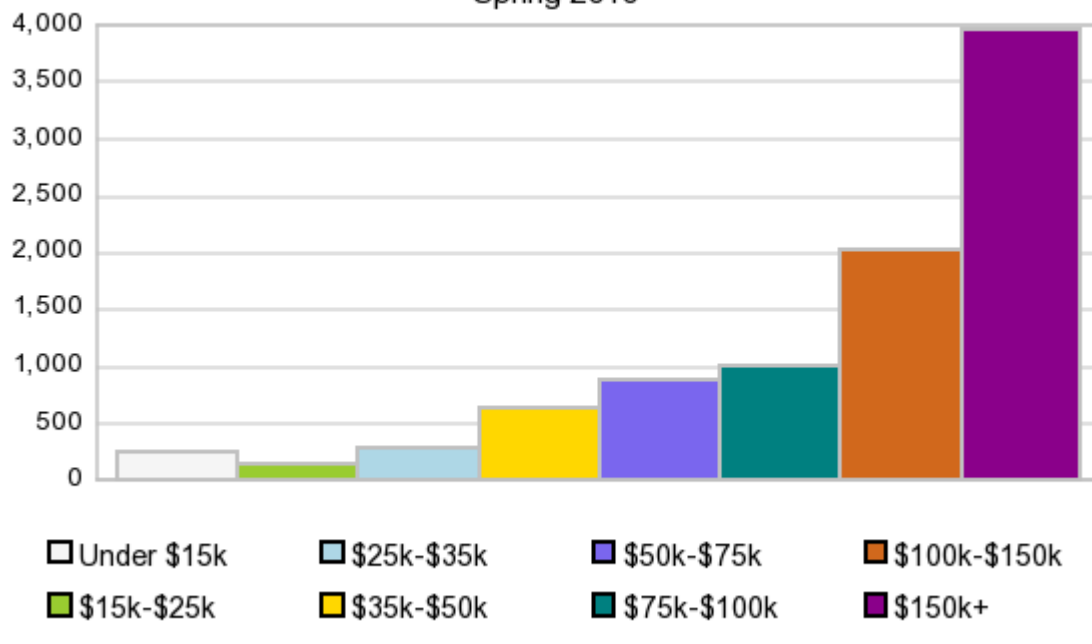
A: White  
 B: Asian Pac Islldr  
 C: Black  
 D: Hispanic  
 E: Amer Indian or Alaska Native  
 F: Other or Multi Race

#### Race & Ethnicity

	1990		2000		Spring 2010		2015		Percent Change	
	Census	%	Census	%	Estimate	%	Projection	%	1990 to 2000	2010-2015
White	14,769	97.0%	21,483	94.2%	26,731	91.5%	29,807	91.1%	45.5%	11.5%
Black	254	1.7%	493	2.2%	644	2.2%	790	2.4%	94.4%	22.7%
American Indian or Alaska Native	11	0.1%	36	0.2%	3	0.0%	1	0.0%	216.1%	-69.8%
Asian or Pacific Islander	179	1.2%	582	2.6%	1,267	4.3%	1,554	4.7%	225.0%	22.7%
Other Race	12	0.1%	61	0.3%	155	0.5%	180	0.6%	420.8%	16.1%
Two or More Races			152	0.7%	410	1.4%	398	1.2%		-3.0%
Hispanic Ethnicity	85	0.6%	280	1.2%	558	1.9%	722	2.2%	228.3%	29.4%
Not Hispanic or Latino	15,140	99.4%	22,528	98.8%	28,653	98.1%	32,008	97.8%	48.8%	11.7%

#### Households by Income

### Households by Income Group Spring 2010



In Spring 2010 the predominant household income category in this study area is **\$150K +**, and the income group that is least represented in this geography is **\$15K - \$25K**.

#### HH Income Categories

	1990 Census		2000 Census		Spring 2010 Estimate		2015 Projection		Percent Change	
		%		%		%		%	1990 to 2000	2010-2015
\$0 - \$15,000	228	4.8%	304	4.1%	241	2.6%	234	2.3%	33.3%	-3.1%
\$15,000 - \$24,999	279	5.9%	165	2.2%	142	1.5%	136	1.4%	-40.7%	-4.4%
\$25,000 - \$34,999	350	7.4%	391	5.3%	275	3.0%	247	2.5%	11.8%	-10.0%
\$35,000 - \$49,999	693	14.6%	760	10.3%	629	6.9%	602	6.0%	9.6%	-4.3%
\$50,000 - \$74,999	1,155	24.3%	883	12.0%	869	9.5%	894	9.0%	-23.5%	2.9%
\$75,000 - \$99,999	903	19.0%	1,015	13.7%	1,017	11.1%	1,032	10.4%	12.4%	1.5%
\$100,000 - \$149,999	708	14.9%	1,600	21.7%	2,032	22.2%	2,210	22.2%	126.1%	8.8%
\$150,000 +	448	9.4%	2,270	30.7%	3,965	43.2%	4,616	46.3%	407.0%	16.4%
Average Hhld Income	\$80,507		\$135,034		\$188,055		\$203,555		67.7%	8.2%
Median Hhld Income	\$68,662		\$104,380		\$133,127		\$141,000		52.0%	5.9%
Per Capita Income	\$26,296		\$43,742		\$62,805		\$66,005		66.3%	5.1%

Current year data is for the year **2010**, 5 year projected data is for the year **2015**. More About Our Data.

Demographic data © 2010 by Experian/Applied Geographic Solutions.

Traffic Count data © 2009 by DataMetrix. All rights reserved.

Business List data © 2009 by D&B®. All rights reserved. All D&B information is powered by DUNSRight™, D&B's Quality Process.

© 2009. DDR is brought to you by SRC, LLC.

SRC, DemographicsNow.com and the SRC and DemographicsNow.com logos are trademarks of SRC, LLC. All rights reserved.

Privacy Statement | License Agreement