



Date: 10/29/10

Current Geography Selection: (1 Selected) Places: Fairview

Your title for this geography: FAIRVIEW

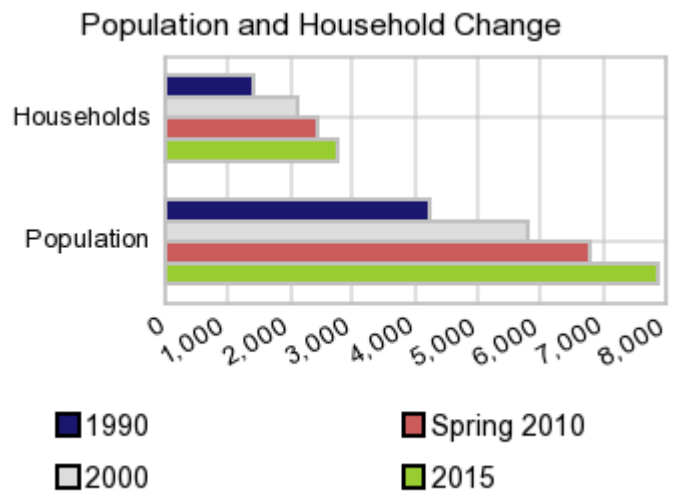
Current Index Base: Entire US

Executive Summary Report with Charts

Population Demographics

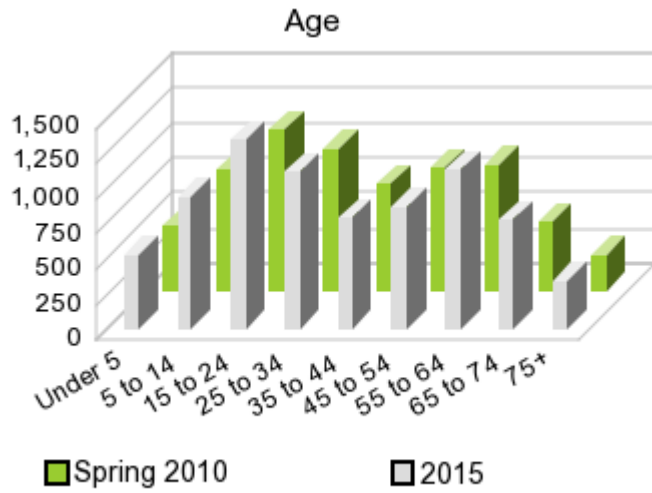
The number of households in the study area in 1990 was **1,436** and changed to **2,131** in 2000, representing a change of **48.4%**. The household count in Spring 2010 was **2,447** and the household projection for 2015 is **2,757**, a change of **12.7%**.

The population in the study area in 1990 was **4,233** and in 2000 it was **5,765**, roughly a **36.2%** change. The population in Spring 2010 was **6,777** and the projection for 2015 is **7,880** representing a change of **16.3%**.



	1990 Census	2000 Census	Spring 2010 Estimate	2015 Projection	Percent Change	
					1990 to 2000	2010- 2015
Total Population	4,233	5,765	6,777	7,880	36.2%	16.3%
Total Households	1,436	2,131	2,447	2,757	48.4%	12.7%

Population by Age



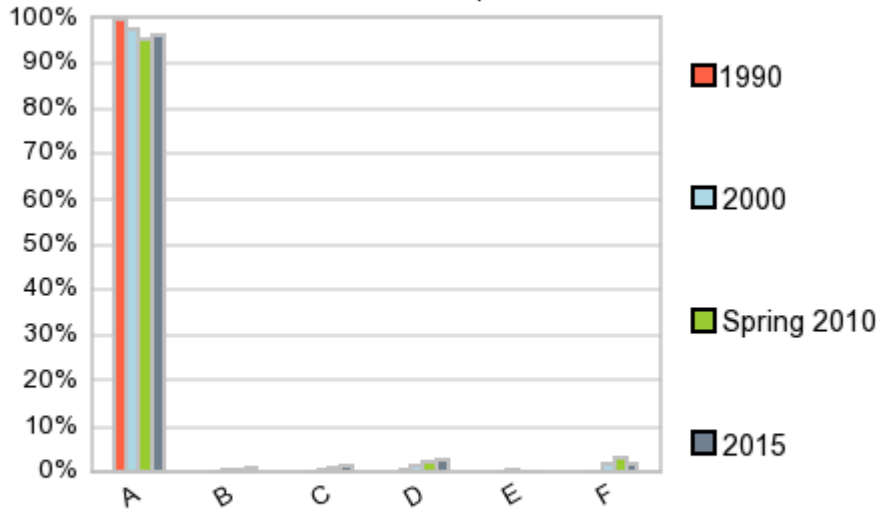
In 1990, the median age of the total population in the study area was **30.7**, and in 2000, it was **32.8**. The median age in Spring 2010 is **33.7** and it is predicted to change in five years to **34.9** years. In Spring 2010, females represented **51.4%** of the population with a median age of **35.1** and males represented **48.6%** of the population with a median age of **32.6** years. In Spring 2010, the most prominent age group in this geography is **Age 25 to 34** years. The age group least represented in this geography is **75 +** years.

Age Groups

Age Groups	1990 Census		2000 Census		Spring 2010 Estimate		2015 Projection		Percent Change	
	Count	%	Count	%	Count	%	Count	%	1990 to 2000	2010-2015
0 to 4	344	8.1%	457	7.9%	464	6.8%	535	6.8%	32.9%	15.3%
5 to 14	748	17.7%	973	16.9%	860	12.7%	945	12.0%	30.1%	9.9%
15 to 19	351	8.3%	408	7.1%	480	7.1%	536	6.8%	16.3%	11.6%
20 to 24	259	6.1%	360	6.2%	669	9.9%	817	10.4%	38.9%	22.2%
25 to 34	776	18.3%	884	15.3%	1,016	15.0%	1,119	14.2%	13.9%	10.2%
35 to 44	723	17.1%	1,023	17.7%	768	11.3%	796	10.1%	41.3%	3.7%
45 to 54	429	10.1%	774	13.4%	879	13.0%	872	11.1%	80.6%	-0.7%
55 to 64	299	7.1%	435	7.6%	894	13.2%	1,137	14.4%	45.7%	27.2%
65 to 74	185	4.4%	273	4.7%	487	7.2%	777	9.9%	48.0%	59.6%
75 +	119	2.8%	177	3.1%	260	3.8%	345	4.4%	49.0%	32.6%

Population by Race/Ethnicity

Race and Ethnicity Percent Composition



In Spring 2010, the predominant race/ethnicity category in this study area is **White**. The race & ethnicity category least represented in this geography is **American Indian, Alaska Native**.

A: White
 B: Asian Pac Islldr
 C: Black
 D: Hispanic
 E: Amer Indian or Alaska Native
 F: Other or Multi Race

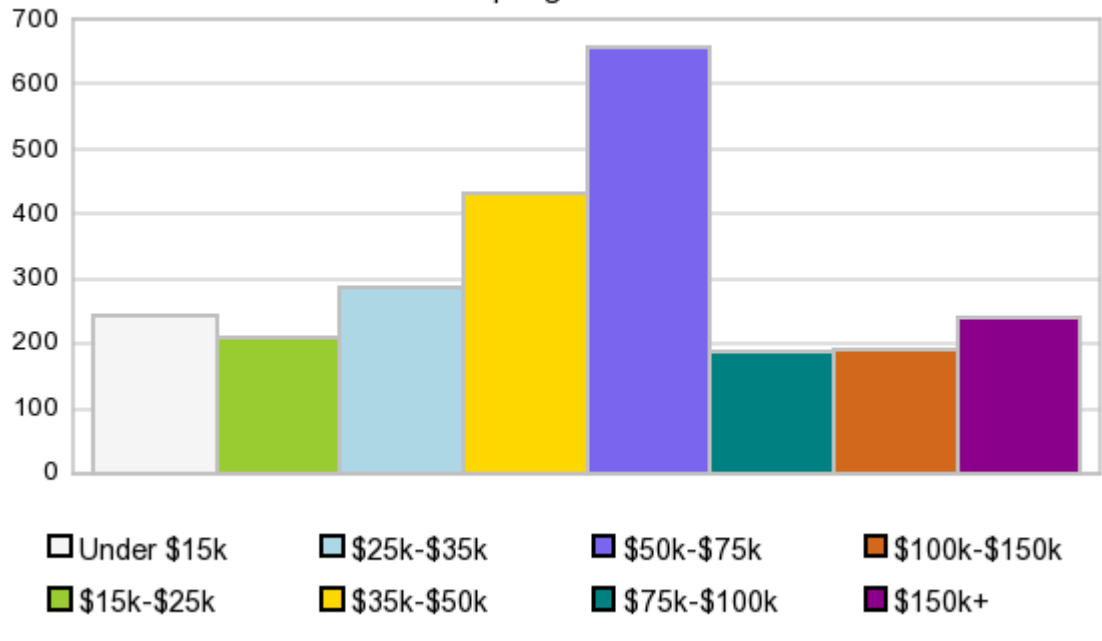
Race & Ethnicity

	1990		2000		Spring 2010		2015		Percent Change	
	Census	%	Census	%	Estimate	%	Projection	%	1990 to 2000	2010-2015
White	4,217	99.6%	5,615	97.4%	6,472	95.5%	7,578	96.2%	33.1%	17.1%
Black	5	0.1%	33	0.6%	54	0.8%	97	1.2%	560.6%	80.5%
American Indian or Alaska Native	1	0.0%	15	0.3%	1	0.0%	1	0.0%	1,167.1%	91.8%
Asian or Pacific Islander	8	0.2%	13	0.2%	34	0.5%	63	0.8%	48.4%	83.9%
Other Race	1	0.0%	14	0.3%	36	0.5%	23	0.3%	1,768.8%	-34.7%
Two or More Races			75	1.3%	180	2.7%	118	1.5%		-34.6%
Hispanic Ethnicity	11	0.3%	82	1.4%	152	2.3%	203	2.6%	650.2%	33.4%
Not Hispanic or Latino	4,222	99.7%	5,682	98.6%	6,624	97.8%	7,677	97.4%	34.6%	15.9%

Households by Income

Households by Income Group Spring 2010

In Spring 2010 the predominant household income category in this study area is **\$50K - \$75K**, and the income group that is least represented in this geography is **\$75K - \$100K**.



HH Income Categories

	1990 Census		2000 Census		Spring 2010 Estimate		2015 Projection		Percent Change	
	Count	%	Count	%	Count	%	Count	%	1990 to 2000	2010-2015
\$0 - \$15,000	289	20.1%	227	10.7%	242	9.9%	258	9.4%	-21.3%	6.8%
\$15,000 - \$24,999	270	18.8%	210	9.9%	209	8.5%	224	8.1%	-22.1%	7.1%
\$25,000 - \$34,999	282	19.6%	339	15.9%	288	11.8%	287	10.4%	20.4%	-0.2%
\$35,000 - \$49,999	378	26.4%	447	21.0%	432	17.7%	457	16.6%	18.1%	5.8%
\$50,000 - \$74,999	181	12.6%	539	25.3%	659	26.9%	752	27.3%	197.9%	14.1%
\$75,000 - \$99,999	19	1.3%	153	7.2%	188	7.7%	213	7.7%	714.4%	13.6%
\$100,000 - \$149,999	16	1.1%	117	5.5%	190	7.8%	237	8.6%	644.3%	24.8%
\$150,000 +	0	0.0%	99	4.6%	240	9.8%	328	11.9%	N/A%	36.9%
Average Hhld Income	\$32,547		\$58,042		\$83,281		\$94,942		78.3%	14.0%
Median Hhld Income	\$31,182		\$43,145		\$51,763		\$54,314		38.4%	4.9%
Per Capita Income	\$10,942		\$21,457		\$29,855		\$32,985		96.1%	10.5%

Current year data is for the year **2010**, 5 year projected data is for the year **2015**. More About Our Data.

Demographic data © 2010 by Experian/Applied Geographic Solutions.

Traffic Count data © 2009 by DataMetrix. All rights reserved.

Business List data © 2009 by D&B®. All rights reserved. All D&B information is powered by DUNSRight™, D&B's Quality Process.

© 2009. DDR is brought to you by SRC, LLC.

SRC, DemographicsNow.com and the SRC and DemographicsNow.com logos are trademarks of SRC, LLC. All rights reserved.

Privacy Statement | License Agreement