



Date: 10/29/10

Current Geography Selection: (1 Selected) Places: Franklin

Your title for this geography: FRANKLIN

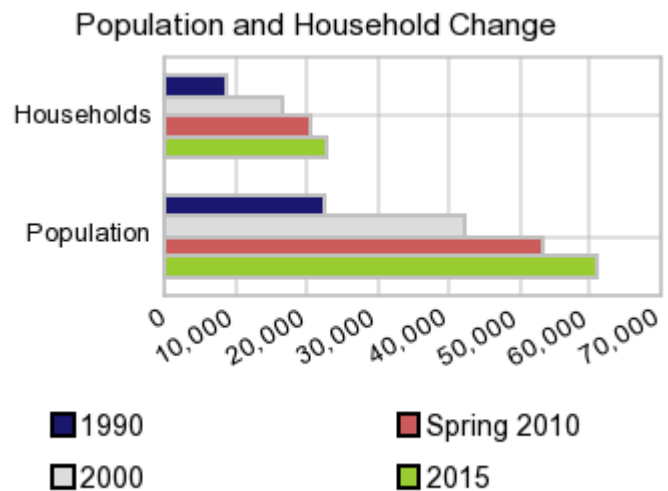
Current Index Base: Entire US

## Executive Summary Report with Charts

### Population Demographics

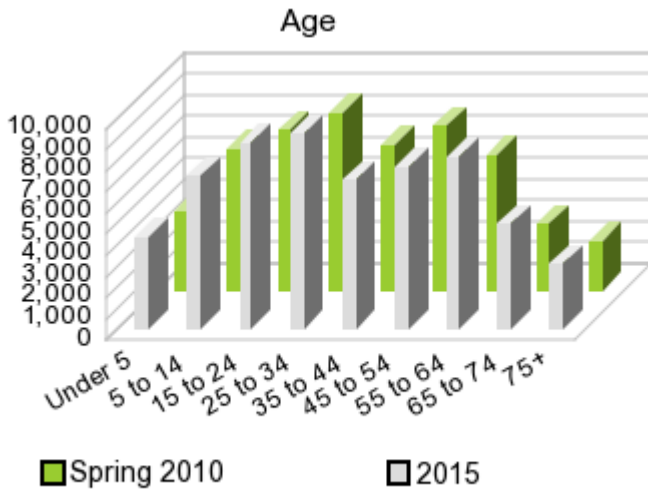
The number of households in the study area in 1990 was **8,783** and changed to **16,476** in 2000, representing a change of **87.6%**. The household count in Spring 2010 was **20,418** and the household projection for 2015 is **22,723**, a change of **11.3%**.

The population in the study area in 1990 was **22,472** and in 2000 it was **42,227**, roughly a **87.9%** change. The population in Spring 2010 was **53,190** and the projection for 2015 is **60,973** representing a change of **14.6%**.



	1990 Census	2000 Census	Spring 2010 Estimate	2015 Projection	Percent Change	
					1990 to 2000	2010- 2015
Total Population	22,472	42,227	53,190	60,973	87.9%	14.6%
Total Households	8,783	16,476	20,418	22,723	87.6%	11.3%

### Population by Age



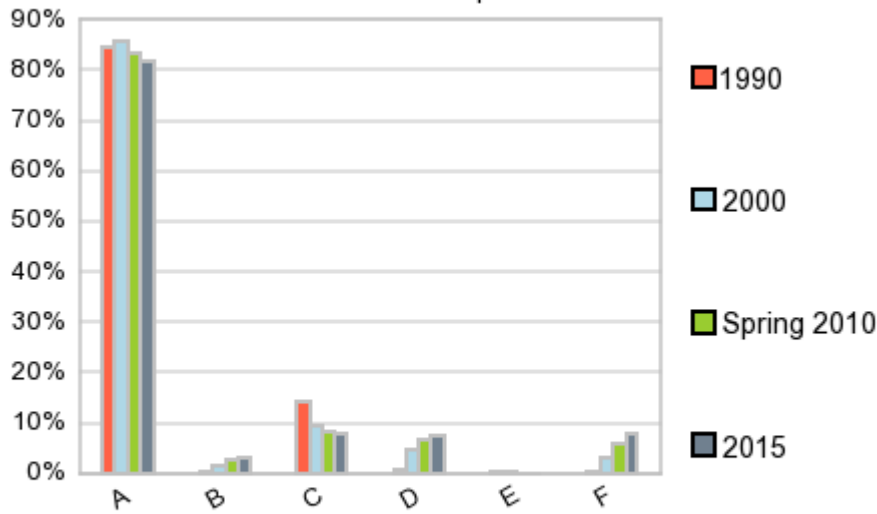
In 1990, the median age of the total population in the study area was **33.1**, and in 2000, it was **34.2**. The median age in Spring 2010 is **35.1** and it is predicted to change in five years to **35.9** years. In Spring 2010, females represented **51.7%** of the population with a median age of **36.9** and males represented **48.4%** of the population with a median age of **33.5** years. In Spring 2010, the most prominent age group in this geography is **Age 25 to 34** years. The age group least represented in this geography is **75 +** years.

**Age Groups**

	1990		2000		Spring 2010		2015		Percent Change	
	Census	%	Census	%	Estimate	%	Projection	%	1990 to 2000	2010-2015
0 to 4	1,816	8.1%	3,414	8.1%	3,801	7.2%	4,409	7.2%	87.9%	16.0%
5 to 14	3,488	15.5%	6,791	16.1%	6,698	12.6%	7,297	12.0%	94.7%	9.0%
15 to 19	1,403	6.2%	2,729	6.5%	3,479	6.5%	3,854	6.3%	94.5%	10.8%
20 to 24	1,264	5.6%	2,035	4.8%	4,119	7.7%	4,942	8.1%	61.0%	20.0%
25 to 34	4,135	18.4%	6,784	16.1%	8,422	15.8%	9,288	15.2%	64.1%	10.3%
35 to 44	4,053	18.0%	8,284	19.6%	6,875	12.9%	7,124	11.7%	104.4%	3.6%
45 to 54	2,416	10.8%	6,113	14.5%	7,818	14.7%	7,744	12.7%	153.0%	-0.9%
55 to 64	1,591	7.1%	2,861	6.8%	6,416	12.1%	8,155	13.4%	79.8%	27.1%
65 to 74	1,174	5.2%	1,678	4.0%	3,164	5.9%	5,041	8.3%	43.0%	59.3%
75 +	1,127	5.0%	1,539	3.6%	2,394	4.5%	3,111	5.1%	36.5%	30.0%

**Population by Race/Ethnicity**

### Race and Ethnicity Percent Composition



In Spring 2010, the predominant race/ethnicity category in this study area is **White**. The race & ethnicity category least represented in this geography is **American Indian, Alaska Native**.

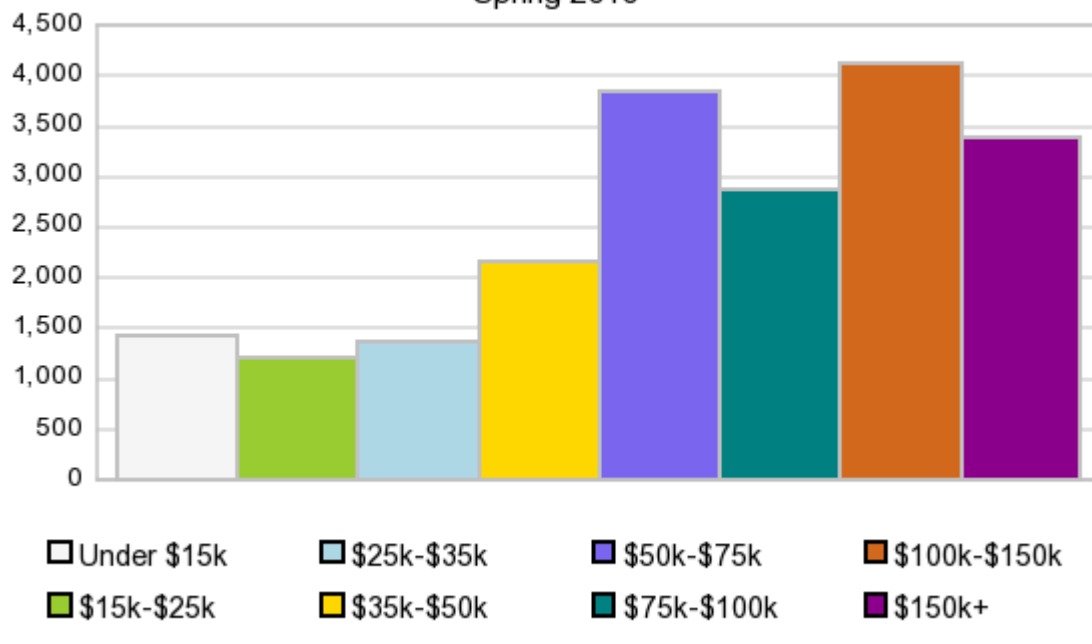
A: White  
 B: Asian Pac Islldr  
 C: Black  
 D: Hispanic  
 E: Amer Indian or Alaska Native  
 F: Other or Multi Race

### Race & Ethnicity

	1990		2000		Spring 2010		2015		Percent Change	
	Census	%	Census	%	Estimate	%	Projection	%	1990 to 2000	2010-2015
White	19,053	84.8%	36,148	85.6%	44,325	83.3%	49,846	81.8%	89.7%	12.5%
Black	3,181	14.2%	4,064	9.6%	4,464	8.4%	4,603	7.6%	27.8%	3.1%
American Indian or Alaska Native	46	0.2%	93	0.2%	9	0.0%	2	0.0%	104.8%	-78.7%
Asian or Pacific Islander	123	0.6%	652	1.5%	1,385	2.6%	1,767	2.9%	430.3%	27.6%
Other Race	66	0.3%	853	2.0%	1,954	3.7%	3,271	5.4%	1,186.8%	67.4%
Two or More Races			416	1.0%	1,053	2.0%	1,483	2.4%		40.8%
Hispanic Ethnicity	199	0.9%	1,919	4.5%	3,471	6.5%	4,450	7.3%	864.6%	28.2%
Not Hispanic or Latino	22,273	99.1%	40,308	95.5%	49,718	93.5%	56,523	92.7%	81.0%	13.7%

### Households by Income

### Households by Income Group Spring 2010



In Spring 2010 the predominant household income category in this study area is **\$100K - \$150K**, and the income group that is least represented in this geography is **\$15K - \$25K**.

#### HH Income Categories

	1990 Census		2000 Census		Spring 2010 Estimate		2015 Projection		Percent Change	
		%		%		%		%	1990 to 2000	2010-2015
\$0 - \$15,000	1,435	16.3%	1,397	8.5%	1,418	6.9%	1,458	6.4%	-2.6%	2.8%
\$15,000 - \$24,999	1,377	15.7%	1,226	7.4%	1,217	6.0%	1,263	5.6%	-10.9%	3.8%
\$25,000 - \$34,999	1,468	16.7%	1,647	10.0%	1,369	6.7%	1,310	5.8%	12.2%	-4.3%
\$35,000 - \$49,999	1,491	17.0%	2,263	13.7%	2,162	10.6%	2,185	9.6%	51.7%	1.1%
\$50,000 - \$74,999	1,704	19.4%	3,298	20.0%	3,845	18.8%	4,199	18.5%	93.6%	9.2%
\$75,000 - \$99,999	793	9.0%	2,508	15.2%	2,891	14.2%	3,132	13.8%	216.2%	8.3%
\$100,000 - \$149,999	310	3.5%	2,684	16.3%	4,141	20.3%	4,882	21.5%	766.3%	17.9%
\$150,000 +	209	2.4%	1,453	8.8%	3,375	16.5%	4,293	18.9%	596.2%	27.2%
Average Hhld Income	\$46,866		\$78,496		\$106,892		\$118,771		67.5%	11.1%
Median Hhld Income	\$36,181		\$62,420		\$76,549		\$82,293		72.5%	7.5%
Per Capita Income	\$17,059		\$30,627		\$39,022		\$41,991		79.5%	7.6%

Current year data is for the year **2010**, 5 year projected data is for the year **2015**. More About Our Data.

Demographic data © 2010 by Experian/Applied Geographic Solutions.

Traffic Count data © 2009 by DataMetrix. All rights reserved.

Business List data © 2009 by D&B®. All rights reserved. All D&B information is powered by DUNSRight™, D&B's Quality Process.

© 2009. DDR is brought to you by SRC, LLC.

SRC, DemographicsNow.com and the SRC and DemographicsNow.com logos are trademarks of SRC, LLC. All rights reserved.

Privacy Statement | License Agreement