



Date: 10/29/10

Current Geography Selection: (1 Selected) Places: Nolensville

Your title for this geography: NOLENSVILLE

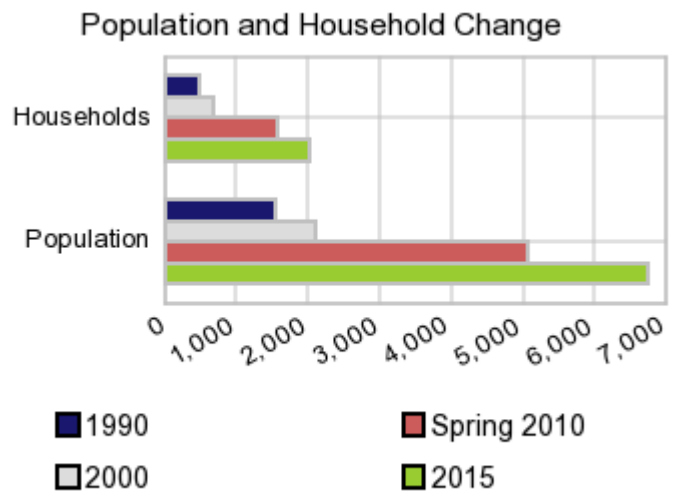
Current Index Base: Entire US

Executive Summary Report with Charts

Population Demographics

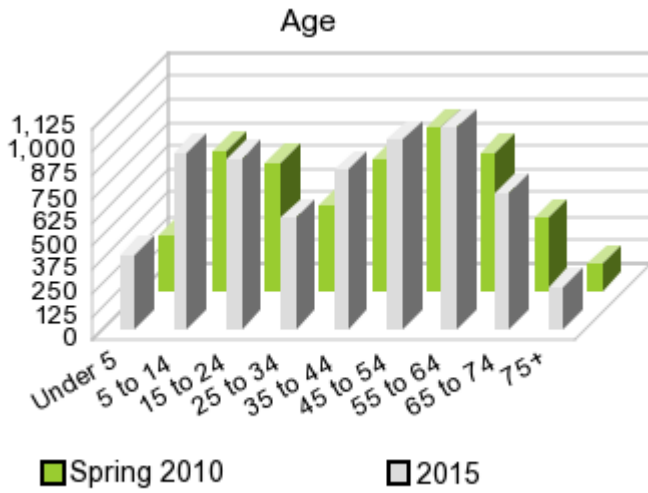
The number of households in the study area in 1990 was **494** and changed to **674** in 2000, representing a change of **36.5%**. The household count in Spring 2010 was **1,567** and the household projection for 2015 is **2,025**, a change of **29.3%**.

The population in the study area in 1990 was **1,550** and in 2000 it was **2,106**, roughly a **35.9%** change. The population in Spring 2010 was **5,044** and the projection for 2015 is **6,731** representing a change of **33.5%**.



	1990 Census	2000 Census	Spring 2010 Estimate	2015 Projection	Percent Change	
					1990 to 2000	2010- 2015
Total Population	1,550	2,106	5,044	6,731	35.9%	33.5%
Total Households	494	674	1,567	2,025	36.5%	29.3%

Population by Age



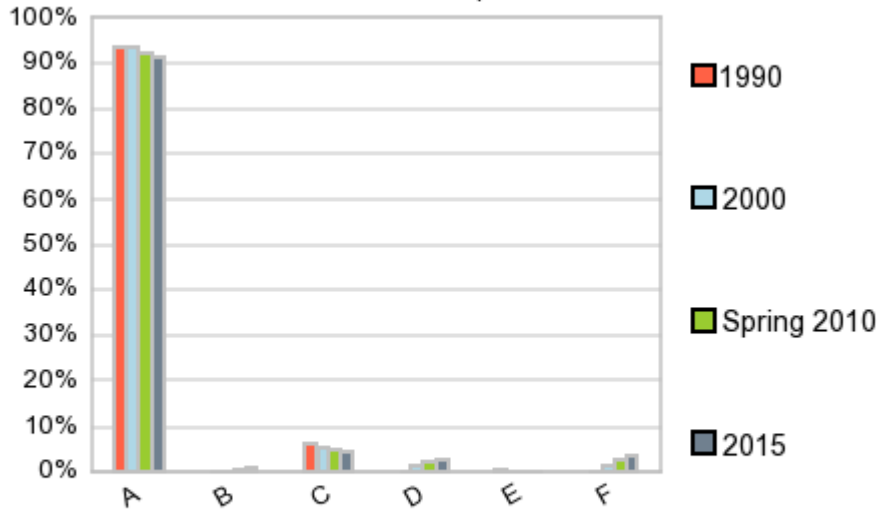
In 1990, the median age of the total population in the study area was **33.7**, and in 2000, it was **37.0**. The median age in Spring 2010 is **39.7** and it is predicted to change in five years to **40.8** years. In Spring 2010, females represented **50.5%** of the population with a median age of **40.4** and males represented **49.5%** of the population with a median age of **39.0** years. In Spring 2010, the most prominent age group in this geography is **Age 45 to 54** years. The age group least represented in this geography is **75 +** years.

Age Groups

Age Groups	1990 Census		2000 Census		Spring 2010 Estimate		2015 Projection		Percent Change	
	Count	%	Count	%	Count	%	Count	%	1990 to 2000	2010-2015
0 to 4	130	8.4%	140	6.7%	300	5.9%	403	6.0%	8.0%	34.4%
5 to 14	271	17.5%	398	18.9%	751	14.9%	945	14.0%	46.8%	25.8%
15 to 19	96	6.2%	155	7.4%	375	7.4%	482	7.2%	61.9%	28.6%
20 to 24	67	4.3%	79	3.8%	308	6.1%	433	6.4%	17.6%	40.6%
25 to 34	253	16.3%	198	9.4%	463	9.2%	593	8.8%	-21.5%	28.2%
35 to 44	315	20.3%	446	21.2%	705	14.0%	845	12.6%	41.6%	19.9%
45 to 54	179	11.5%	360	17.1%	874	17.3%	1,008	15.0%	101.1%	15.3%
55 to 64	119	7.6%	175	8.3%	732	14.5%	1,070	15.9%	47.3%	46.3%
65 to 74	67	4.3%	106	5.0%	391	7.7%	730	10.8%	58.1%	86.9%
75 +	53	3.4%	49	2.3%	147	2.9%	223	3.3%	-9.1%	52.2%

Population by Race/Ethnicity

Race and Ethnicity Percent Composition



In Spring 2010, the predominant race/ethnicity category in this study area is **White**. The race & ethnicity category least represented in this geography is **American Indian, Alaska Native**.

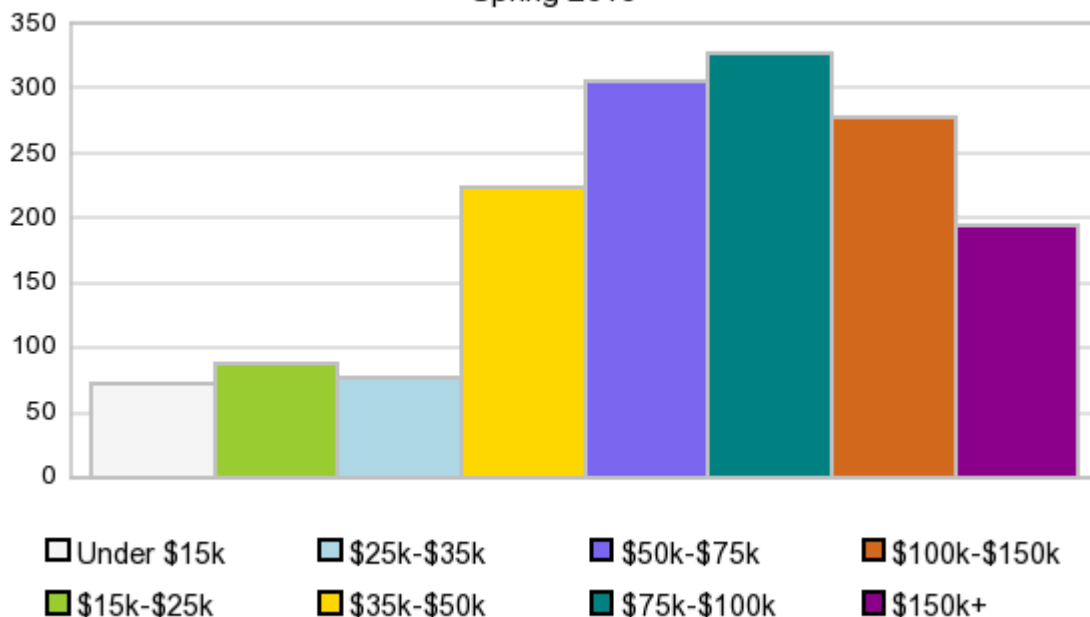
A: White
 B: Asian Pac Islr
 C: Black
 D: Hispanic
 E: Amer Indian or Alaska Native
 F: Other or Multi Race

Race & Ethnicity

	1990		2000		Spring 2010		2015		Percent Change	
	Census	%	Census	%	Estimate	%	Projection	%	1990 to 2000	2010-2015
White	1,449	93.4%	1,968	93.5%	4,650	92.2%	6,165	91.6%	35.9%	32.6%
Black	91	5.8%	104	4.9%	231	4.6%	300	4.5%	14.3%	29.5%
American Indian or Alaska Native	8	0.5%	3	0.1%	0	0.0%	0	0.0%	-60.2%	-100.0%
Asian or Pacific Islander	2	0.1%	4	0.2%	23	0.5%	51	0.8%	168.0%	121.4%
Other Race	2	0.1%	13	0.6%	65	1.3%	102	1.5%	544.4%	55.7%
Two or More Races			14	0.7%	73	1.5%	115	1.7%		56.4%
Hispanic Ethnicity	2	0.2%	29	1.4%	109	2.2%	169	2.5%	1,190.4%	54.4%
Not Hispanic or Latino	1,548	99.9%	2,077	98.6%	4,934	97.8%	6,563	97.5%	34.2%	33.0%

Households by Income

Households by Income Group Spring 2010



In Spring 2010 the predominant household income category in this study area is **\$75K - \$100K**, and the income group that is least represented in this geography is **\$0 - \$15K**.

HH Income Categories

	1990 Census		2000 Census		Spring 2010 Estimate		2015 Projection		Percent Change	
		%		%		%		%	1990 to 2000	2010-2015
\$0 - \$15,000	29	6.0%	39	5.9%	72	4.6%	85	4.2%	34.0%	18.1%
\$15,000 - \$24,999	56	11.3%	50	7.5%	89	5.7%	104	5.2%	-9.9%	17.7%
\$25,000 - \$34,999	62	12.6%	49	7.3%	77	4.9%	84	4.2%	-21.3%	9.6%
\$35,000 - \$49,999	154	31.2%	120	17.8%	225	14.3%	264	13.0%	-22.0%	17.4%
\$50,000 - \$74,999	146	29.6%	133	19.8%	305	19.5%	391	19.3%	-8.9%	27.9%
\$75,000 - \$99,999	39	7.9%	144	21.3%	327	20.9%	419	20.7%	268.2%	27.9%
\$100,000 - \$149,999	7	1.4%	94	13.9%	278	17.7%	384	19.0%	1,255.0%	38.4%
\$150,000 +	1	0.2%	44	6.5%	194	12.4%	294	14.5%	4,601.9%	51.7%
Average Hhld Income	\$46,937		\$75,192		\$104,889		\$117,344		60.2%	11.9%
Median Hhld Income	\$46,031		\$64,234		\$76,124		\$79,485		39.5%	4.4%
Per Capita Income	\$15,459		\$24,045		\$33,803		\$36,643		55.5%	8.4%

Current year data is for the year **2010**, 5 year projected data is for the year **2015**. More About Our Data.

Demographic data © 2010 by Experian/Applied Geographic Solutions.

Traffic Count data © 2009 by DataMetrix. All rights reserved.

Business List data © 2009 by D&B®. All rights reserved. All D&B information is powered by DUNSRight™, D&B's Quality Process.

© 2009. DDR is brought to you by SRC, LLC.

SRC, DemographicsNow.com and the SRC and DemographicsNow.com logos are trademarks of SRC, LLC. All rights reserved.

Privacy Statement | License Agreement