



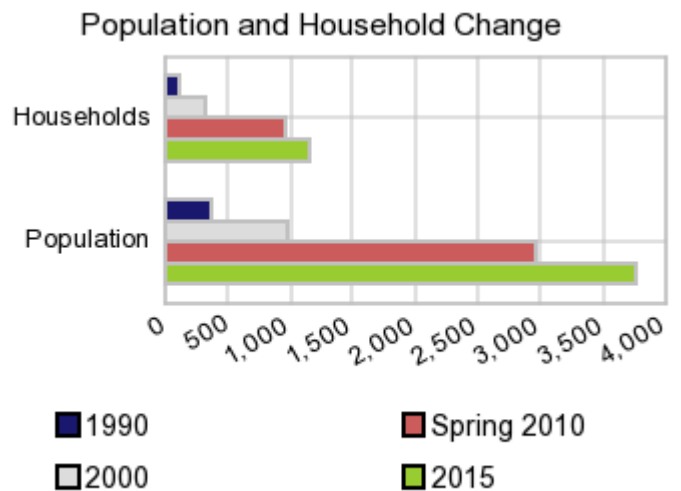
**Date:** 10/29/10  
**Current Geography Selection:** (1 Selected) Places: Thompson's Station  
**Your title for this geography:** THOMPSON'S STATION  
**Current Index Base:** Entire US

## Executive Summary Report with Charts

### Population Demographics

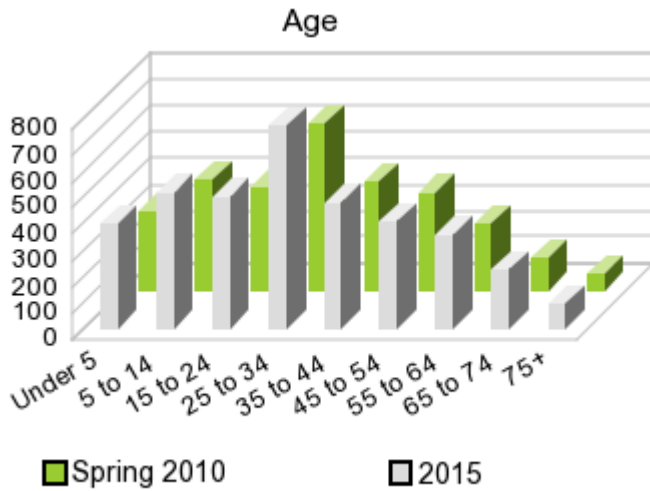
The number of households in the study area in 1990 was **126** and changed to **328** in 2000, representing a change of **160.4%**. The household count in Spring 2010 was **954** and the household projection for 2015 is **1,166**, a change of **22.2%**.

The population in the study area in 1990 was **364** and in 2000 it was **979**, roughly a **169.2%** change. The population in Spring 2010 was **2,973** and the projection for 2015 is **3,751** representing a change of **26.2%**.



	1990 Census	2000 Census	Spring 2010 Estimate	2015 Projection	Percent Change	
					1990 to 2000	2010-2015
Total Population	364	979	2,973	3,751	169.2%	26.2%
Total Households	126	328	954	1,166	160.4%	22.2%

### Population by Age



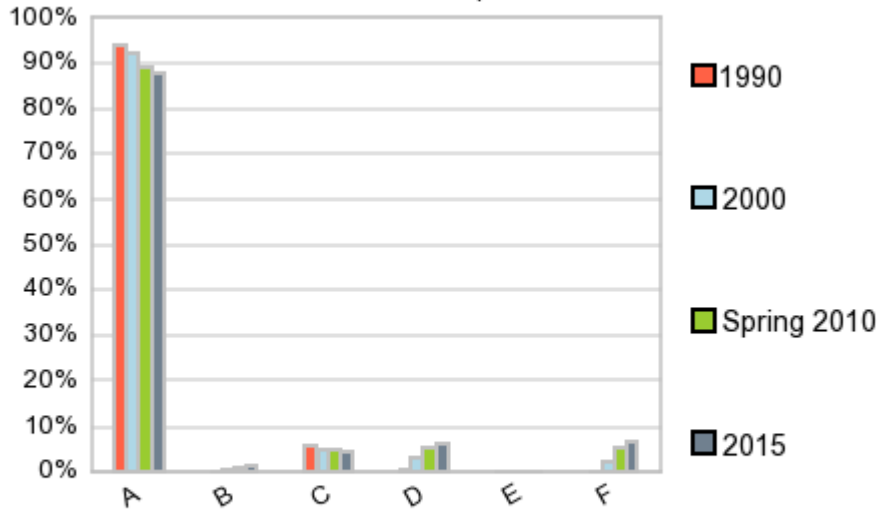
In 1990, the median age of the total population in the study area was **34.2**, and in 2000, it was **32.0**. The median age in Spring 2010 is **30.6** and it is predicted to change in five years to **31.0** years. In Spring 2010, females represented **49.9%** of the population with a median age of **30.7** and males represented **50.2%** of the population with a median age of **30.6** years. In Spring 2010, the most prominent age group in this geography is **Age 25 to 34** years. The age group least represented in this geography is **75 +** years.

### Age Groups

	1990 Census		2000 Census		Spring 2010 Estimate		2015 Projection		Percent Change	
		%		%		%		%	1990 to 2000	2010-2015
0 to 4	24	6.6%	100	10.2%	305	10.3%	397	10.6%	313.1%	29.9%
5 to 14	56	15.5%	164	16.7%	422	14.2%	515	13.7%	191.6%	22.1%
15 to 19	28	7.7%	63	6.4%	190	6.4%	232	6.2%	126.4%	22.4%
20 to 24	18	4.9%	41	4.2%	200	6.7%	268	7.2%	129.9%	34.1%
25 to 34	61	16.8%	184	18.8%	629	21.2%	774	20.6%	200.5%	23.0%
35 to 44	67	18.4%	195	19.9%	412	13.8%	477	12.7%	190.3%	15.8%
45 to 54	43	11.8%	126	12.9%	370	12.4%	409	10.9%	192.6%	10.5%
55 to 64	30	8.2%	54	5.5%	252	8.5%	354	9.4%	82.3%	40.5%
65 to 74	21	5.9%	31	3.2%	127	4.3%	228	6.1%	45.6%	79.4%
75 +	15	4.2%	21	2.2%	66	2.2%	97	2.6%	41.8%	46.1%

### Population by Race/Ethnicity

### Race and Ethnicity Percent Composition



In Spring 2010, the predominant race/ethnicity category in this study area is **White**. The race & ethnicity category least represented in this geography is **American Indian, Alaska Native**.

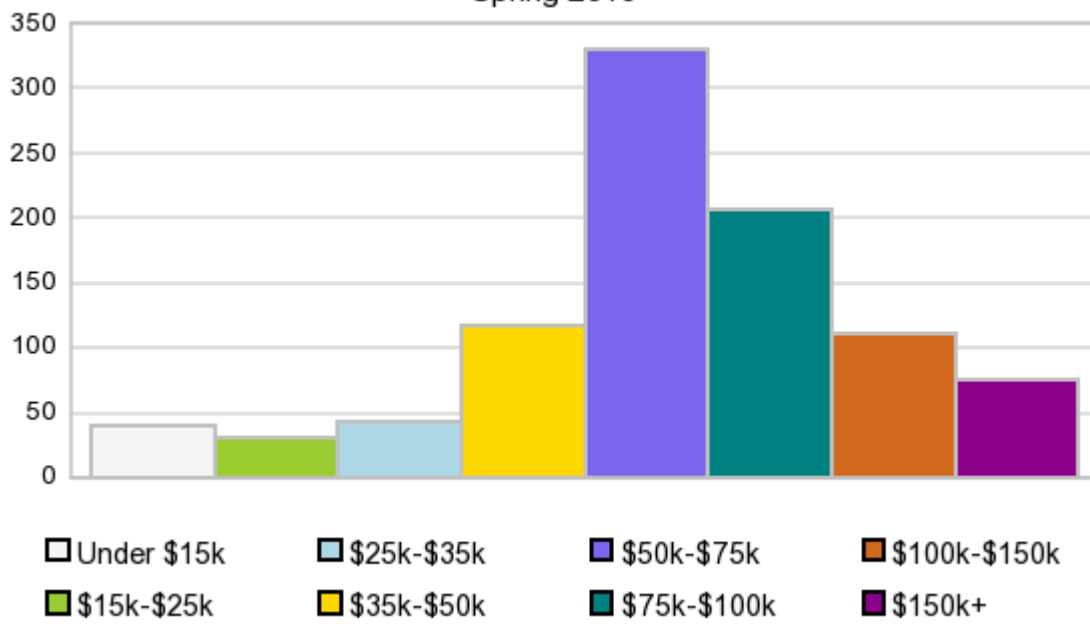
A: White  
 B: Asian Pac Islldr  
 C: Black  
 D: Hispanic  
 E: Amer Indian or Alaska Native  
 F: Other or Multi Race

#### Race & Ethnicity

	1990		2000		Spring 2010		2015		Percent Change	
	Census	%	Census	%	Estimate	%	Projection	%	1990 to 2000	2010-2015
White	342	94.1%	904	92.4%	2,655	89.3%	3,292	87.8%	164.3%	24.0%
Black	20	5.6%	48	4.9%	137	4.6%	166	4.4%	135.8%	20.8%
American Indian or Alaska Native	1	0.2%	1	0.1%	0	0.0%	0	0.0%	46.1%	-66.7%
Asian or Pacific Islander	0	0.1%	5	0.5%	31	1.0%	49	1.3%	1,147.9%	58.3%
Other Race	0	0.0%	12	1.2%	87	2.9%	142	3.8%	50,343.9%	63.0%
Two or More Races			9	0.9%	63	2.1%	102	2.7%		61.7%
Hispanic Ethnicity	1	0.4%	28	2.9%	153	5.2%	223	5.9%	1,769.3%	45.4%
Not Hispanic or Latino	362	99.6%	951	97.1%	2,820	94.9%	3,528	94.1%	162.6%	25.1%

#### Households by Income

### Households by Income Group Spring 2010



In Spring 2010 the predominant household income category in this study area is **\$50K - \$75K**, and the income group that is least represented in this geography is **\$15K - \$25K**.

#### HH Income Categories

	1990 Census		2000 Census		Spring 2010 Estimate		2015 Projection		Percent Change	
		%		%		%		%	1990 to 2000	2010-2015
\$0 - \$15,000	23	18.6%	22	6.6%	41	4.3%	46	4.0%	-6.8%	13.0%
\$15,000 - \$24,999	23	18.6%	16	4.8%	30	3.1%	34	2.9%	-32.4%	13.7%
\$25,000 - \$34,999	19	15.1%	27	8.3%	43	4.5%	45	3.9%	43.0%	5.1%
\$35,000 - \$49,999	22	17.4%	48	14.6%	116	12.2%	131	11.3%	117.4%	13.1%
\$50,000 - \$74,999	27	21.3%	108	33.1%	330	34.7%	403	34.6%	304.2%	22.0%
\$75,000 - \$99,999	8	6.0%	66	20.0%	207	21.7%	252	21.6%	773.9%	21.9%
\$100,000 - \$149,999	3	2.3%	27	8.2%	111	11.7%	147	12.6%	815.9%	31.7%
\$150,000 +	1	0.8%	14	4.4%	75	7.9%	107	9.2%	1,366.5%	42.7%
Average Hhld Income	\$41,125		\$68,184		\$84,151		\$91,606		65.8%	8.9%
Median Hhld Income	\$33,273		\$61,616		\$67,897		\$69,603		85.2%	2.5%
Per Capita Income	\$14,119		\$22,821		\$27,223		\$28,723		61.6%	5.5%

Current year data is for the year **2010**, 5 year projected data is for the year **2015**. More About Our Data.

Demographic data © 2010 by Experian/Applied Geographic Solutions.

Traffic Count data © 2009 by DataMetrix. All rights reserved.

Business List data © 2009 by D&B®. All rights reserved. All D&B information is powered by DUNSRight™, D&B's Quality Process.

© 2009. DDR is brought to you by SRC, LLC.

SRC, DemographicsNow.com and the SRC and DemographicsNow.com logos are trademarks of SRC, LLC. All rights reserved.

Privacy Statement | License Agreement