



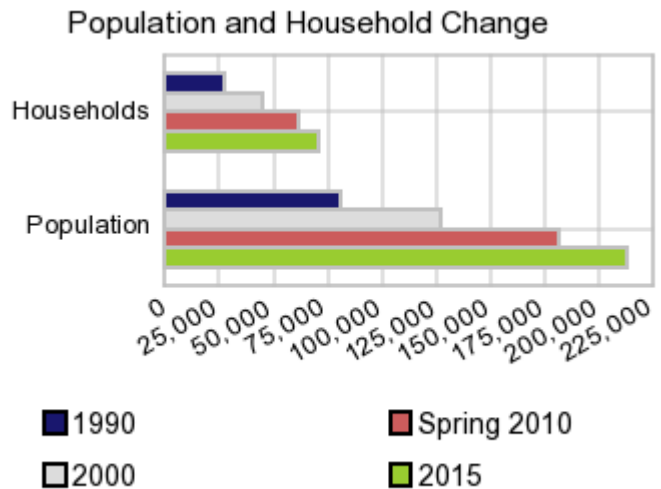
Date: 10/29/10
Current Geography Selection: (1 Selected) Counties: Williamson County
Your title for this geography: WILLIAMSON COUNTY
Current Index Base: Entire US

Executive Summary Report with Charts

Population Demographics

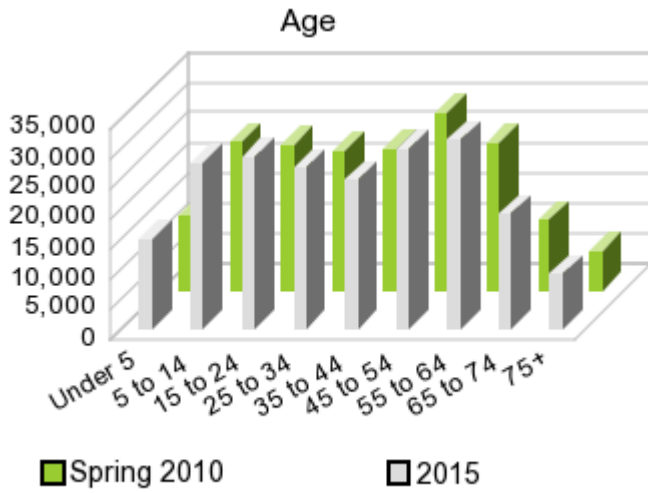
The number of households in the study area in 1990 was **27,927** and changed to **44,725** in 2000, representing a change of **60.2%**. The household count in Spring 2010 was **61,893** and the household projection for 2015 is **70,429**, a change of **13.8%**.

The population in the study area in 1990 was **81,020** and in 2000 it was **126,638**, roughly a **56.3%** change. The population in Spring 2010 was **180,891** and the projection for 2015 is **212,352** representing a change of **17.4%**.



	1990 Census	2000 Census	Spring 2010 Estimate	2015 Projection	Percent Change	
					1990 to 2000	2010- 2015
Total Population	81,020	126,638	180,891	212,352	56.3%	17.4%
Total Households	27,927	44,725	61,893	70,429	60.2%	13.8%

Population by Age



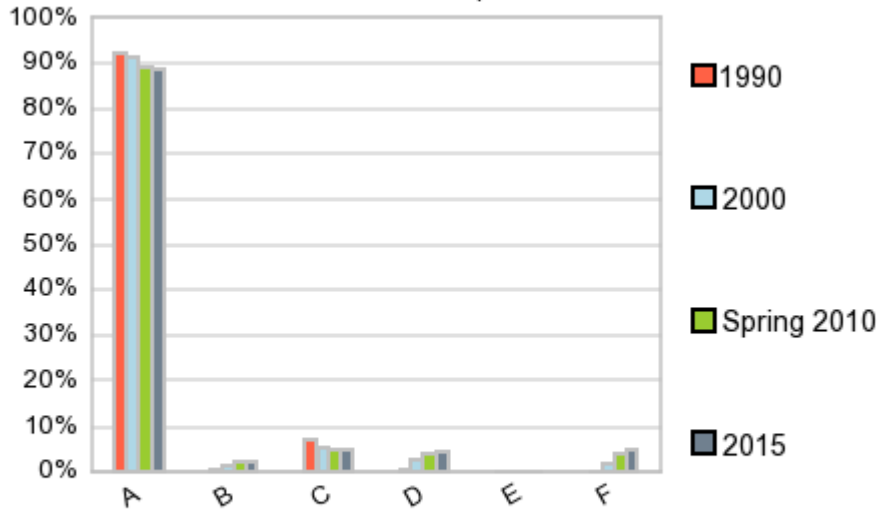
In 1990, the median age of the total population in the study area was **34.2**, and in 2000, it was **36.2**. The median age in Spring 2010 is **37.6** and it is predicted to change in five years to **38.3** years. In Spring 2010, females represented **50.7%** of the population with a median age of **38.7** and males represented **49.3%** of the population with a median age of **36.5** years. In Spring 2010, the most prominent age group in this geography is **Age 45 to 54** years. The age group least represented in this geography is **75 +** years.

Age Groups

	1990 Census		2000 Census		Spring 2010 Estimate		2015 Projection		Percent Change	
		%		%		%		%	1990 to 2000	2010-2015
0 to 4	6,034	7.5%	9,169	7.2%	12,430	6.9%	14,881	7.0%	52.0%	19.7%
5 to 14	13,685	16.9%	21,866	17.3%	24,712	13.7%	27,548	13.0%	59.8%	11.5%
15 to 19	5,834	7.2%	9,105	7.2%	12,739	7.0%	14,375	6.8%	56.1%	12.8%
20 to 24	3,994	4.9%	5,067	4.0%	11,598	6.4%	14,332	6.8%	26.9%	23.6%
25 to 34	12,237	15.1%	15,505	12.2%	23,302	12.9%	26,653	12.6%	26.7%	14.4%
35 to 44	16,206	20.0%	24,535	19.4%	23,394	12.9%	24,772	11.7%	51.4%	5.9%
45 to 54	10,184	12.6%	21,243	16.8%	29,671	16.4%	29,963	14.1%	108.6%	1.0%
55 to 64	6,157	7.6%	10,337	8.2%	24,538	13.6%	31,555	14.9%	67.9%	28.6%
65 to 74	3,929	4.9%	5,691	4.5%	11,705	6.5%	19,137	9.0%	44.8%	63.5%
75 +	2,761	3.4%	4,120	3.3%	6,790	3.8%	9,122	4.3%	49.2%	34.3%

Population by Race/Ethnicity

Race and Ethnicity Percent Composition



In Spring 2010, the predominant race/ethnicity category in this study area is **White**. The race & ethnicity category least represented in this geography is **American Indian, Alaska Native**.

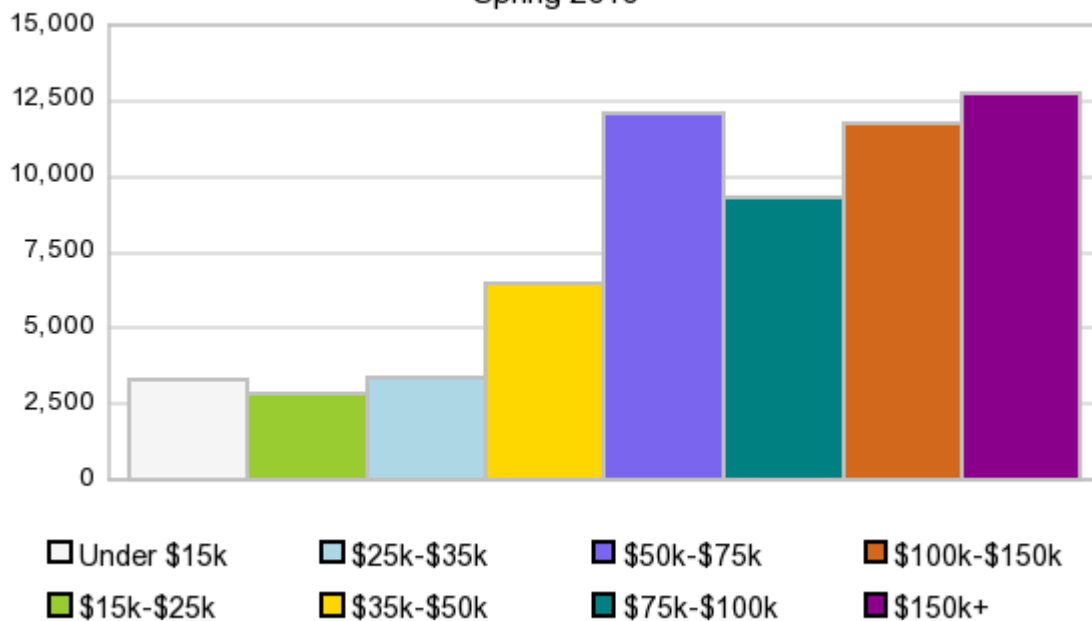
A: White
 B: Asian Pac Islldr
 C: Black
 D: Hispanic
 E: Amer Indian or Alaska Native
 F: Other or Multi Race

Race & Ethnicity

	1990		2000		Spring 2010		2015		Percent Change	
	Census	%	Census	%	Estimate	%	Projection	%	1990 to 2000	2010-2015
White	74,902	92.5%	115,941	91.6%	161,836	89.5%	187,987	88.5%	54.8%	16.2%
Black	5,395	6.7%	6,564	5.2%	8,576	4.7%	9,686	4.6%	21.7%	12.9%
American Indian or Alaska Native	130	0.2%	248	0.2%	27	0.0%	6	0.0%	90.8%	-77.8%
Asian or Pacific Islander	468	0.6%	1,615	1.3%	3,747	2.1%	4,991	2.4%	245.1%	33.2%
Other Race	122	0.2%	1,226	1.0%	3,544	2.0%	5,649	2.7%	904.9%	59.4%
Two or More Races			1,044	0.8%	3,161	1.8%	4,033	1.9%		27.6%
Hispanic Ethnicity	520	0.6%	3,197	2.5%	7,032	3.9%	9,418	4.4%	514.8%	33.9%
Not Hispanic or Latino	80,500	99.4%	123,441	97.5%	173,859	96.1%	202,934	95.6%	53.3%	16.7%

Households by Income

Households by Income Group Spring 2010



In Spring 2010 the predominant household income category in this study area is **\$150K +**, and the income group that is least represented in this geography is **\$15K - \$25K**.

HH Income Categories

	1990 Census		2000 Census		Spring 2010 Estimate		2015 Projection		Percent Change	
		%		%		%		%	1990 to 2000	2010-2015
\$0 - \$15,000	3,668	13.1%	3,120	7.0%	3,284	5.3%	3,440	4.9%	-14.9%	4.8%
\$15,000 - \$24,999	3,466	12.4%	2,653	5.9%	2,794	4.5%	2,959	4.2%	-23.5%	5.9%
\$25,000 - \$34,999	3,847	13.8%	3,867	8.6%	3,370	5.4%	3,284	4.7%	0.5%	-2.6%
\$35,000 - \$49,999	5,122	18.3%	5,976	13.4%	6,450	10.4%	6,713	9.5%	16.7%	4.1%
\$50,000 - \$74,999	5,912	21.2%	8,699	19.5%	12,100	19.6%	13,719	19.5%	47.1%	13.4%
\$75,000 - \$99,999	3,091	11.1%	6,922	15.5%	9,348	15.1%	10,440	14.8%	123.9%	11.7%
\$100,000 - \$149,999	1,758	6.3%	7,477	16.7%	11,786	19.0%	13,940	19.8%	325.3%	18.3%
\$150,000 +	1,072	3.8%	6,011	13.4%	12,761	20.6%	15,934	22.6%	460.7%	24.9%
Average Hhld Income	\$55,349		\$91,152		\$121,883		\$133,027		64.7%	9.1%
Median Hhld Income	\$43,609		\$69,041		\$82,737		\$86,994		58.3%	5.1%
Per Capita Income	\$19,124		\$32,192		\$41,977		\$44,353		68.3%	5.7%

Current year data is for the year **2010**, 5 year projected data is for the year **2015**. More About Our Data.

Demographic data © 2010 by Experian/Applied Geographic Solutions.

Traffic Count data © 2009 by DataMetrix. All rights reserved.

Business List data © 2009 by D&B®. All rights reserved. All D&B information is powered by DUNSRight™, D&B's Quality Process.

© 2009. DDR is brought to you by SRC, LLC.

SRC, DemographicsNow.com and the SRC and DemographicsNow.com logos are trademarks of SRC, LLC. All rights reserved.

Privacy Statement | License Agreement